

SHIPMENT

DATE RECD.

MAIN INDEX

Jap
Cities & Towns ✓
Animals ✓
Political ✓
U.S.A. ✓
Transport ✓
Industry ✓
Food ✓

CROSS INDEX

Street scenes

SEOUL, KOREA. ✓

DELOUSING. ✓

JAPANESE. ✓

SHIPS. ✓

HALSEY, ADMIRAL. ✓

HORSES. ✓

LOANS ✓

BRETTON WOODS. ✓

HALIFAX, LORD. ✓

VINSON, U.S. SECRETARY OF THE TREASURY. ✓

SINGAPORE. ✓

RICKSHAWS. ✓

LAUNDRY ✓

SHOPS. ✓

LANTERNS ✓

BANANAS. ✓

CHILDREN, MALAY. ✓

CRASHES. ✓

CRANES. ✓

ROOSEVELT, MRS. E. ✓

VANDERBURE, A. ✓

CONNOLLY, TOM. ✓

STETTINIUS, MR. ✓

FILED IN

trams. ✓

Quayside. ✓

Police. ✓
Ferryhill Station. ✓

PAGE NEWS 46-3.

SUBJECT

NEG : : B & W : : LAVENDER :

COMBINED : : TRACK : : MUTE : :

VIEWED ON 18.9.46.

DETAILS

KOREAN CLEAR OUT.

1. Street scene in Seoul in Korea.
2. The Main square of Seoul with electric tram towing loaded trailer passing camera.
3. Delousing embarking Japanese.
4. Japs queuing on quayside with ship in dock.
5. Japs boarding ship.
6. Overhead shot of ship laden with departing Japs.

HORSE FOR HALSEY.

1. Admiral 'Bull' Halsey rides a white horse through a crowd of other high ranking officers.
2. With other officers sing the 'Red Flag' arranged with comical words, regarding the Japanese.
3. Receives medallion from Saints and Sinners Club of New York and places it on his neck.

BRETTON WOODS PACT SIGNED?

1. Lord Halifax the British Ambassador signs.
2. Mrs. Vinson U.S. Secretary of the Treasury signs speaks a few words (National Sound).

PRICES ROCKET IN SINGAPORE.

1. Street scene in Singapore with coolie pulling a rickshaw. Large quantities of washing hanging from lines in usual tenement style.
2. CU of shop window displaying 'Atomix' silks.
3. Interior of shop with two uniformed British girls inspecting and handling goods.
4. Painting designs on lanterns.
5. Bananas on market stall.
6. Four young children eating from rice bowls smile at camera

SLEEPER EXPRESS CRASHES.

1. Debris of train with rescuers at work.
2. Police carrying a victim from the wreckage on stretcher.
3. Crane hauling wreckage away.
4. Smashed coach suspended by two cranes in the air.

P.T.O.

Police. ✓
Ferryhill Station. ✓

SHIPMENT

DATE RECD.

MAIN INDEX

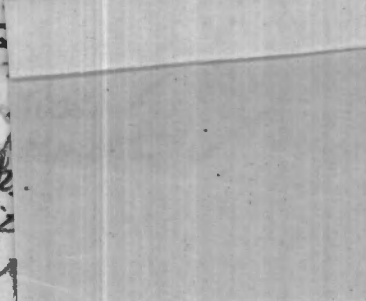
Jap
Bites & Toys ✓
Animals ✓
Political ✓
U.S.A. ✓
Transport ✓
Industry ✓
Food ✓
Machinery ✓
USSR ✓
Ships ✓

USED STORY

UNUSED

CUTS

GUSTEV. AMBASSADOR
KAYLOV. PROFESSOR



Washing
Washing
Painting
MARTIN, FRED. ✓
WILSON, MRS. A. ✓
SINGAPORE. ✓
RICKSHAW. ✓
LAUNDRY ✓
SHOPS. ✓
LANTERNS ✓
BANANAS. ✓
CHILDREN, MALAY. ✓
CRANES, TRAIN. ✓
CRANES. ✓
ROOSEVELT, MRS. E. ✓
VAN DERBURG, A. ✓
CONNOLLY, TOM. ✓
STETTINIUS, MA. ✓
FILED IN

tramcars
Quaysides
Police. Brit
ships
Ferryhill station

PATHE NEWS 46-3.

SUBJECT

VIEWED ON 18.9.46.

NEG : : B & W : : LAVENDER :

COMBINED : : TRACK : : MUTE : :

DETAILS

KOREAN CLEAR OUT.

1. Street scene in Seoul in Korea.
2. The Main square of Seoul with electric tram towing loaded trailer passing camera.
3. Delousing embarking Japanese.
4. Japs queuing on quayside with ship in dock.
5. Japs boarding ship.
6. Overhead shot of ship laden with departing Japs.

HORSE FOR HALSEY.

1. Admiral "Bull" Halsey rides a white horse through a crowd of other high ranking officers.
2. With other officers sing the 'Red Flag' arranged with comical words, regarding the Japanese.
3. Receives medallion from Saints and Sinners Club of New York and places it on his neck.

BRETTON WOODS PACT SIGNED?

1. Lord Halifax the British Ambassador signs.
2. Mrs. ^{Vander} U.S. Secretary of the Treasury signs speaks a few words (National Sound).

PRICES ROCKET IN SINGAPORE.

1. Street scene in Singapore with coolie pulling a rickshaw. Large quantities of washing hanging from lines in usual tenement style.
2. CU of shop window displaying 'Atomis' silks.
3. Interior of shop with two uniformed British girls inspecting and handling goods.
4. Painting designs on lanterns.
5. Bananas on market stall.
6. Four young children eating from rice bowls smile at camera

SLEEPER EXPRESS CRASHES.

1. Debris of train with rescuers at work.
2. Police carrying a victim from the wreckage on stretcher.
3. Crane hauling wreckage away.
4. Smashed coach suspended by two cranes in the air.

MRS.F.D.R. HERE FOR U.N.O. TALKS.

1. Group shot of Mrs.F.D.Roosevelt, Tom Connolly and A.Vanderburg.
2. CU. of Mrs FDR with A.Stettinius.
3. Soviet Ambassador Gussev leaving plane at Northolt followed by Professor Krylov.
4. ss Queen Elizabeth being towed by tugs into Southampton.
5. Mrs.FDR,Connolly,Vanderburg and Stettinius with the Mayor and Mayoress of Southampton walking towards camera.
6. Mrs.FDR smiling, shakes hands with the Mayor.
7. Mrs. FDR speaks on the hopes of UNO.

SHIPMENT
 DATE RECD.
 MAY INDEX

DETAILS

KOREAN CLEAR OUT.

1. Street scene in Seoul in Korea.
2. The main square of Seoul with electric tram towing loaded trailer passing camera.
3. Belonging embarking Japanese.
4. Legs protruding on quayside with ship in dock.
5. Legs protruding away.
6. Overhead shot of ship laden with departing legs.

HORSE FOR HAWAII.

1. Admiral Mililani rides a white horse through a crowd of other high ranking officers.
2. With other officers and the 'Red Flag', arranged with confocal words, regarding the Japanese.
3. Recieves medalion from Saints and Sinners Club of New York and places it on his neck.

BRITISH WORDS FOR SIGNIFY.

1. Lord Halifax the British ambassador signs.
2. Mr. ... U.S. Secretary of the Treasury signs speaks a few words (Retinal Sound).

PRICES ROCKET IN SINGAPORE.

1. Str of scene in Singapore the scene pulling a rickshaw. Large quantities of washing hanging from lines in usual tenement style.
2. CU of shop window displaying 'Atomic' signs.
3. Interior of shop with two uniformed British girls inspecting and handling goods.
4. Paintings designs on lanterns.
5. Bananas on market stall.
6. Four young children sitting from rice bowls and cones.

BLITZ IN SINGAPORE.

1. Debris of train with rescuers at work.
2. Police carrying a victim from the wreckage on stretcher.
3. Crane handling wreckage away.
4. Sashed coach suspended by two cranes in the air.

SHIPMENT
 DATE RECD.
 MAY INDEX
 USED STORY
 UNUSHD
 CUTS
 CROSS INDEX
 Seoul Korea
 Densuime
 Japanese
 HARRY HAMAR
 HORSES
 LOANS
 BRITISH WORDS
 HARRY
 MISS
 MISS
 SINGAPORE
 RICHMOND
 LAUNDRY
 SHOPS
 PANAMA
 PANAMA
 CHILDREN
 CRASHES
 CRASHES
 KOREAN
 VANDERBURG
 CONNOLLY
 STRATTIN
 SHIP IN