

VARIETY CLUB OF GREAT BRITAIN

TENT No. 36

1960 ♥ CREW

Officers

MONTY M. BERMAN, M.B.E.
Chief Barker

IRVING ALLEN
First Assistant Chief Barker

SAM ECKMAN, Jr., C.B.E.
Second Assistant Chief Barker

MICK SHIPMAN
Dough Guy

D. J. GOODLATTE
Property Master

Elder Statesmen

C. J. LATTA
(Inc. European Rep.)
D. J. GOODLATTE
JAMES CARRERAS, M.B.E.
(Inc. Property Master)
NAT COHEN
M. J. FRANKOVICH
SIR TOM O'BRIEN
W. E. BUTLIN, M.B.E.

Canvasmen

CHARLES FORTE
BILL LEVY
BILLY MANNING
KENNETH MORE
C. PEARL
HARRY WOOLF

Press Guy

DAVID JONES

OPENING OF CONDOVER HALL ANNEXE FOR BLIND-DEAF CHILDREN

A new £40,000 annexe to accommodate blind-deaf children at Condover Hall, near Shrewsbury, is to be opened on May 3rd. The annexe, which is to be called "Pathways", is adjacent to the main building which was established by the Royal National Institute for the Blind to cater for blind children who are additionally handicapped.

The opening ceremony will be performed by Mr. Godfrey Robinson, C.B.E., M.C., Chairman of the R.N.I.B., who is himself blind.

The Variety Club of Great Britain, the children's charity organisation, in association with the Emil Wertheimer Trust and the British Juke-Box Operators' Association, subscribed £18,000 towards the establishment of "Pathways". The balance of the money was provided by the Dulverton Trust and the Ministry of Education.

"Pathways" results from an experiment begun eight years ago at Condover Hall, which accepted four blind-deaf children for training -- something which, so far as is known, had never before been undertaken anywhere in Europe.

So successful was the scheme that it has become necessary to provide a blind-deaf unit to accommodate 15 children, who at "Pathways" will be cared for by a staff of 20. Each child will be individually trained.

Variety Club's interest in the "Pathways" project resulted from the Club's contribution to the establishment of the R.N.I.B. Sunshine Home for Blind Babies, Southerndown, South Wales. It was when making a film of the Home's activities that the sympathy of members was drawn to Shirley Griffiths, who was the only resident at the centre who was additionally afflicted by deafness and dumbness.

THE HEART OF SHOW BUSINESS

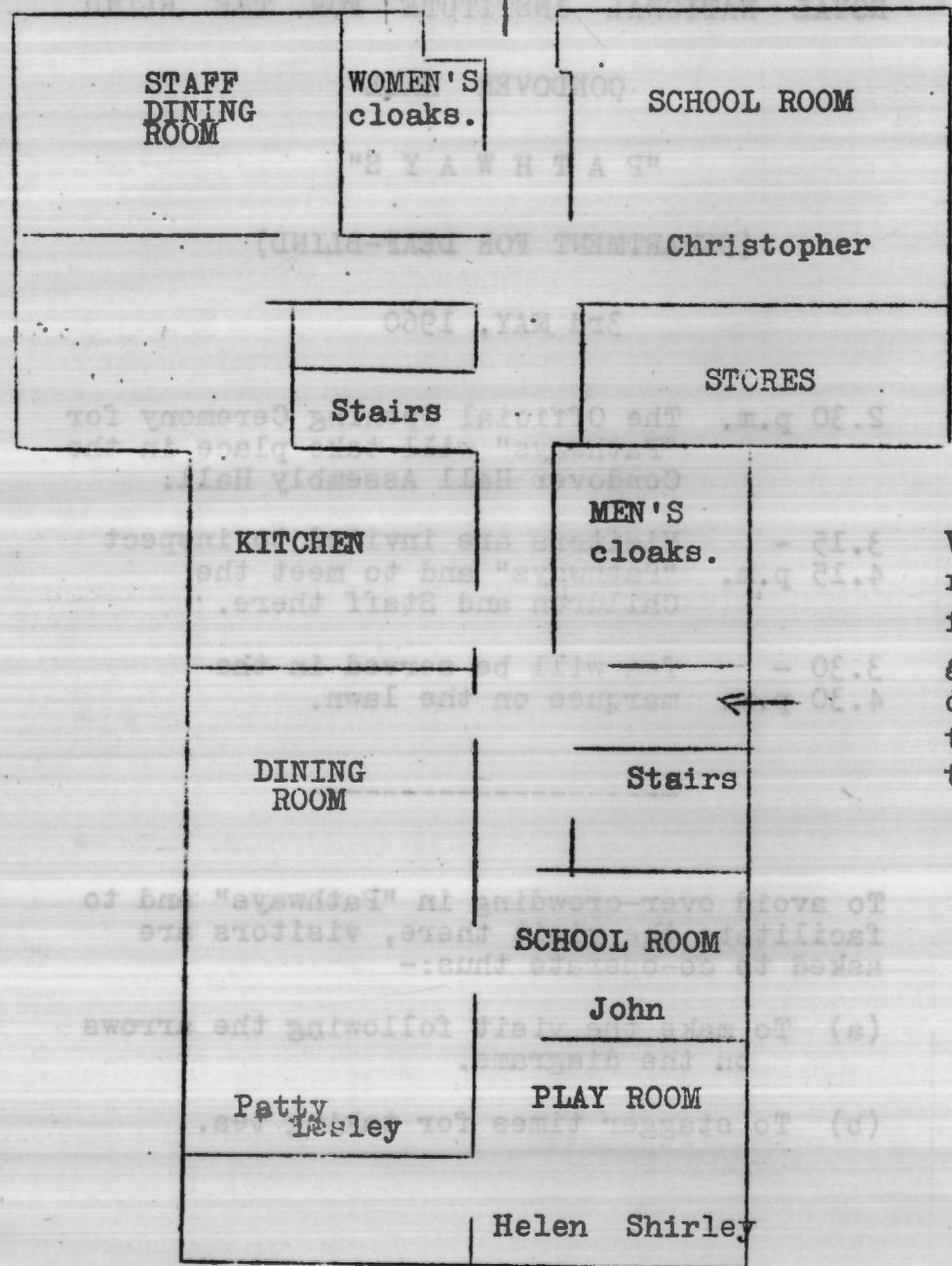


Mr. Bill Butlin, a Variety Club executive, established a trust fund of £500 a year for the girl, and engaged the services of a State Registered Nurse to help care for and train her in her own home.

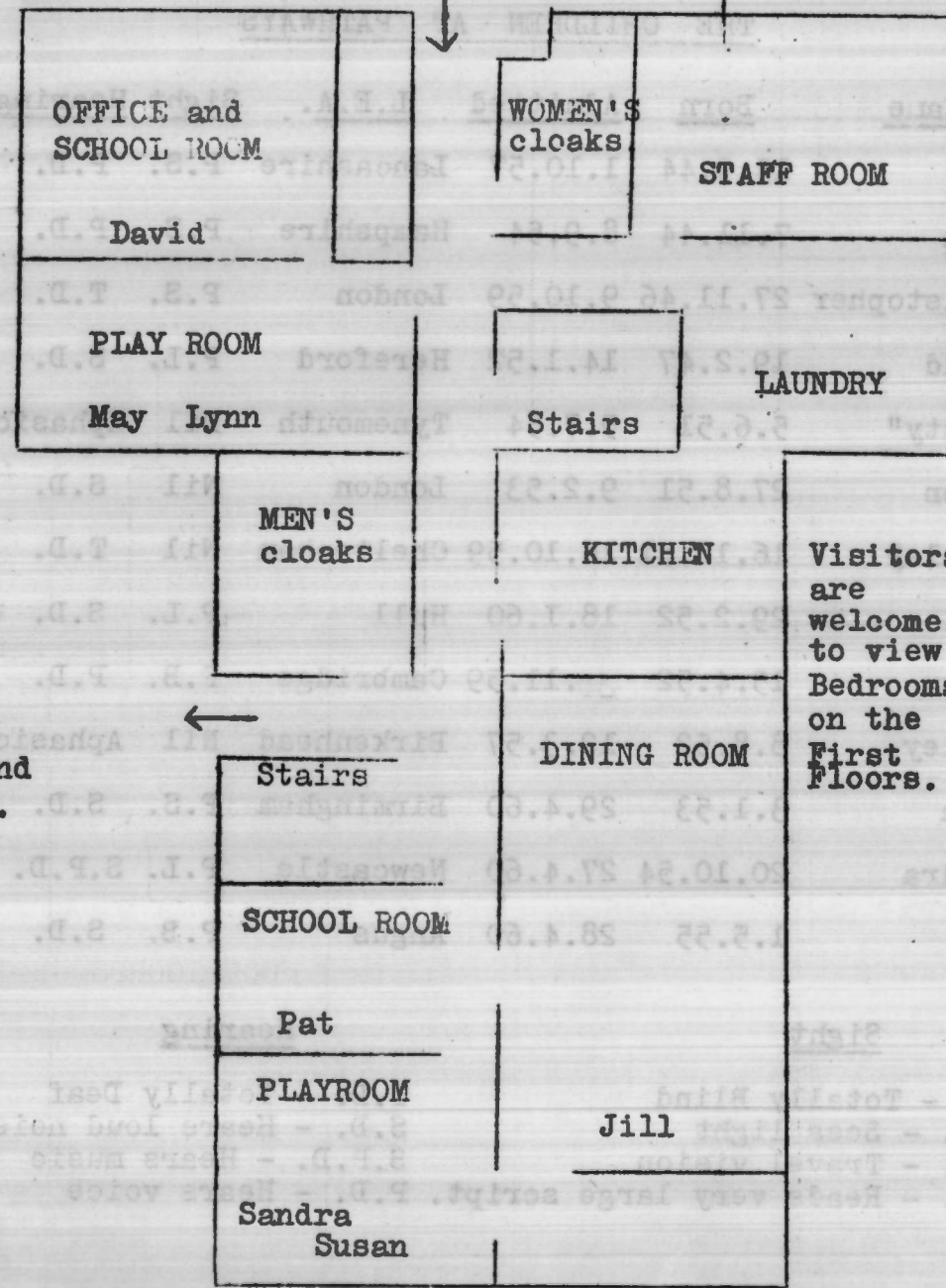
Since her transfer to Condoover Hall, three months ago, Shirley Griffiths has shown a slight improvement, although it is yet too early to determine whether the child is educable.

With the Compliments of: David Jones, Press Guy, Variety Club,
143, Wardour Street, W.1. GERRARD 9787

Block A



Block B



Visitors are requested to follow the general direction of the arrows and to circulate.

Toilets for visitors available on the ground floor at Pathways.

THE CHILDREN AT PATHWAYS

<u>Name</u>	<u>Born</u>	<u>Admitted</u>	<u>L.E.A.</u>	<u>Sight</u>	<u>Hearing</u>
Pat	15.9.44	1.10.57	Lancashire	P.S.	P.D.
John	7.11.44	8.9.54	Hampshire	P.S.	P.D.
Christopher	27.11.46	9.10.59	London	P.S.	T.D.
David	19.2.47	14.1.52	Hereford	P.L.	S.D.
"Patty"	5.6.51	5.7.54	Tynemouth	Nil	Aphasic
Helen	27.8.51	9.2.53	London	Nil	S.D.
Shirley	16.12.51	16.10.59	Cheltenham	Nil	T.D.
Jill	29.2.52	18.1.60	Hull	P.L.	S.D.
Susan	15.4.52	30.11.59	Cambridge	P.B.	P.D.
Lesley	8.8.52	12.3.57	Birkenhead	Nil	Aphasic
Lynn	3.1.53	29.4.60	Birmingham	P.S.	S.D.
Sandra	20.10.54	27.4.60	Newcastle	P.L.	S.P.D.
May	1.5.55	28.4.60	Angus	P.B.	S.D.

Sight

Hearing

Nil - Totally Blind
 P.I. - Sees light
 P.B. - Travel vision
 P.S. - Reads very large script.

T.D. - Totally Deaf
 S.D. - Hears loud noises
 S.P.D. - Hears music
 P.D. - Hears voice

ROYAL NATIONAL INSTITUTE FOR THE BLIND

CONDOVER HALL

"PATHWAYS"

(DEPARTMENT FOR DEAF-BLIND)

3rd MAY, 1960

- 2.30 p.m. The Official Opening Ceremony for "Pathways" will take place in the Condover Hall Assembly Hall.
- 3.15 - Visitors are invited to inspect "Pathways" and to meet the Children and Staff there.
- 4.15 p.m. Tea will be served in the marquee on the lawn.

To avoid over-crowding in "Pathways" and to facilitate the visit there, visitors are asked to co-operate thus:-

- (a) To make the visit following the arrows on the diagrams.
- (b) To stagger times for taking tea.

PRESS INFORMATION

issued by . . .

THE ROYAL NATIONAL INSTITUTE FOR THE BLIND

224, GREAT PORTLAND STREET, LONDON, W.1. :: Telephone: EUSon 5251

Reference GC/62

Date 19.4.60.

For release Immediately

OPENING OF NEW PREMISES FOR DEAF-BLIND CHILDREN Success of an experiment

At 2.30 p.m. on Tuesday, 3rd May, MR. GODFREY ROBINSON, C.B.E., M.C., Chairman of the Royal National Institute for the Blind, and himself a blind man, will perform the official opening ceremony of "Pathways", the newly-extended department for Deaf-Blind children at Conover Hall - the Institute's school for blind children with additional handicaps - Conover, near Shrewsbury, Salop.

The first attempt in this country, and indeed in Europe, to assess and educate deaf-blind children in a special Unit was started by the R.N.I.B. in 1952 on an experimental basis at Conover Hall. No reliable information was then available on the national total of educable deaf-blind children and initially accommodation for 4 children was provided. This figure was later increased to 5. So successful did the scheme prove that it soon became apparent that still more places were needed.

Now, through the generosity of the Variety Club of Great Britain, and grants from the Dulverton Trust and the Ministry of Education, the R.N.I.B. has been enabled to build special premises in the grounds of Conover Hall, which can accommodate 15 deaf-blind children of different ages. Here, at "Pathways", a staff of twenty will, from a wealth of accumulated experience, strive to break through the double barriers and to bring to these heavily handicapped children the means to enable them to develop into adults capable of accepting at least limited responsibility for the fulfilment of their daily needs.