

The representative body of the British Caravan Movement.

N

NATIONAL CARAVAN  
COUNCIL

CC

NEWS

PRESS INQUIRIES TO:

HOWARD S. COTTON LTD.,  
WARDROBE HOUSE,  
WARDROBE PLACE,  
LONDON, E.C.4 TELEPHONE: CITY 7101/5

SECOND INTERNATIONAL CARAVAN EXHIBITION

OLYMPIA - November 30 to December 6

(excluding Sunday December 4)

A country walk - in the heart of London - is the setting against which more than 300 caravans, ranging from giant mobile homes up to 44ft. in length to tiny touring models, will be displayed by 152 Exhibitors including Manufacturers, Traders, Site Operators and producers of Accessories and Equipment. The price range of the caravans is under £200 to £2,000 and over.

\* \* \*

Lord Tedder of Glenguin, Marshal of the Royal Air Force and Chairman of Standard-Triumph International Ltd., formally opened the Exhibition at 12 noon on Wednesday 30 November.

\* \* \*

Organised by the National Caravan Council and the Daily Mail, the Exhibition will be 25 per cent larger

Cont.....

than last year, and every facet of the caravan industry will be on view. The actual floor area of the Exhibition is 43 acres.

\* \* \*

It is hoped that last year's figure of 100,000 visitors will be exceeded. In 1959 orders for £3,000,000 worth of caravans and equipment were placed - the biggest single fillip the industry had ever received.

\* \* \*

1960 is the British Caravan Industry's 21st anniversary. It began as an organisation of the caravan movement in 1939 and was producing about 1,500 vans a year. The potential production for 1961 is 45,000 caravans, and over 3,000,000 people now take annual holidays in them. About 250,000 live in them permanently.

\* \* \*

Some five thousand Local Authority officials have been invited to the Exhibition, as the organisers consider that the show will provide the perfect setting for Local Authorities to see the latest trends in the design of modern caravans and to discuss any matters concerning the Caravan Act, 1960, the Minister's Model Standards,

Cont.....

and similar topics with experts.

\* \* \*

The industry is expanding its export and of its production next year ~~about~~ ten percent should go overseas. Buyers from all over the Continent are expected at the Show.

With Compliments:

Howard S. Cotton Ltd.,  
Wardrobe House,  
Wardrobe Place,  
London, E C.4.

Tel: CITY 7101/5.



SPRITE LIMITED - CARAVAN SHOW, 1960

Stand M25

Sprite Countryman 4/5-berth Caravan

Dimensions

Body length	17 ft. 10 in.	T 848H
Overall length	21 ft. 2 in.	
Less Drawbar	17 ft. 11 in.	
Overall width	7 ft. 6 in.	
Overall height	8 ft. 8 in.	
Headroom	6 ft. 4 in.	
Weight ex-works	20 cwt. (stove 1 cwt. extra)	
Maximum permissible weight	24 cwt.	
Cars suitable	2 litres and upwards.	

Chassis

Welded steel frame with independent wishbone-type suspension by coil springs. Fully compensated over-run brakes. Tyre equipment, 6.00 x 16. 12 volt electrical system with two front towing lamps, two rear and stop lamps, flashing indicators. Adjustable slide and clamp type jockey wheel.

Body

Timber framing with aluminium exterior panels and hardboard interior.  $1\frac{3}{8}$  in. cavity insulated with glass-fibre. Six top hinged metal framed windows. One fixed door window. Two opening Perspex roof lights. Two doors. Body has streamlined roof and rear fins.

Equipment

Two single berths, one double berth and a one-tier bunk.

Centre partition dividing lounge from kitchen, curtain to close off rear bedroom.

Lounge contains, U-shaped seat, day seat, tip-up bed, wardrobe, waist height cabinet or solid-fuel stove and airing cabinet.

Curtains and pelmets.

Sink unit and gas cooker. Plastics-faced working tops, shelved cupboards and wall locker. Space provided in kitchen for refrigerator and water storage tanks.

Two gas lighting points in lounge, and one in kitchen.

Prices

Countryman

a. With hotplate	£365
b. With hotplate and solid fuel stove	£375
c. With cooker	£375
d. With cooker and solid fuel stove	£385
e. Countryman, shell only	£305

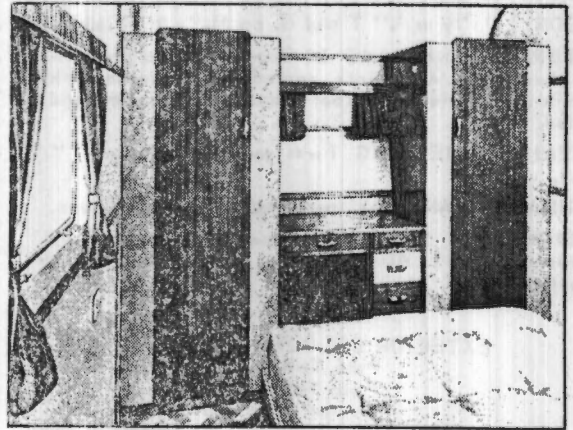
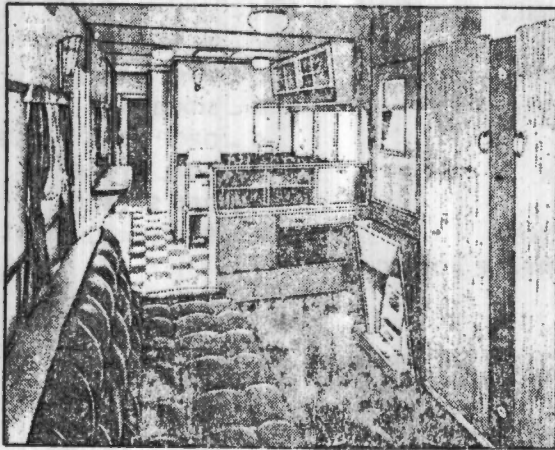
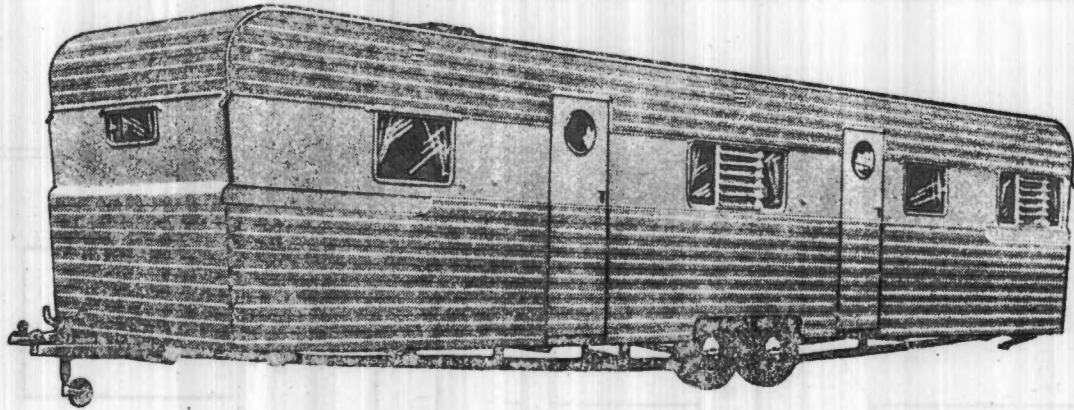
Lent

£35-10-0

# SANDRINGHAM CARAVANS

37

MK. I and II

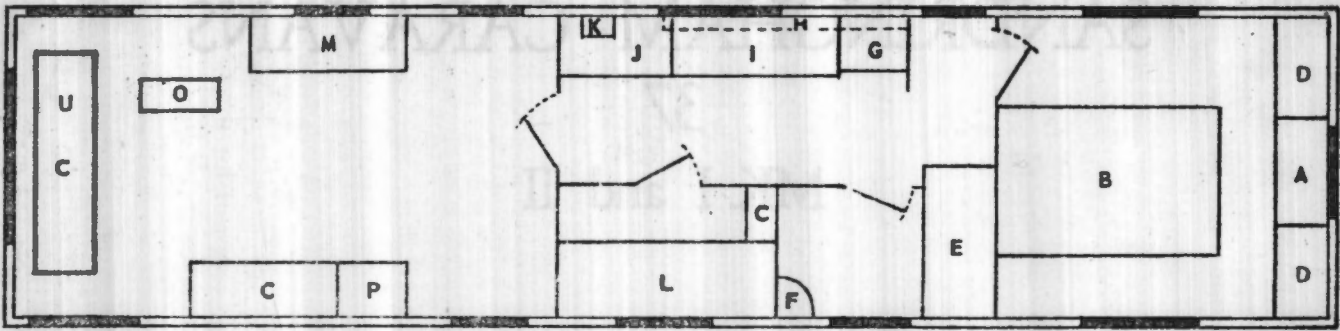


MANUFACTURED BY:

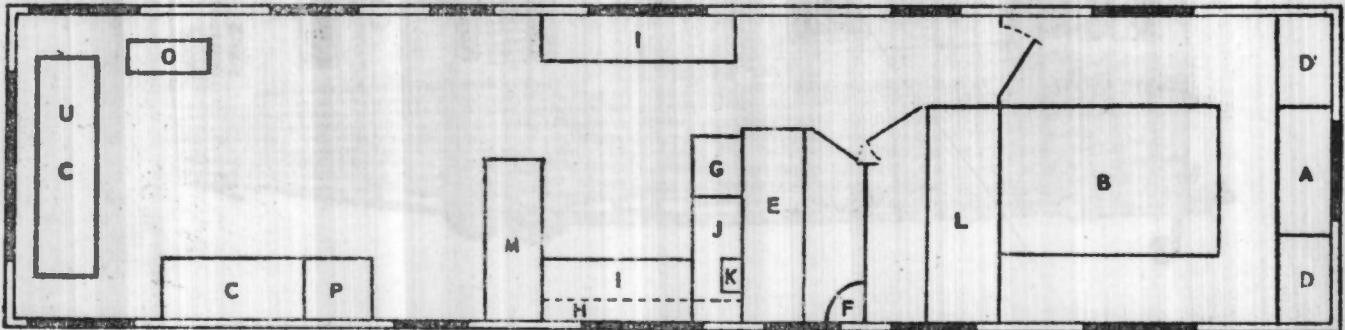
Telephone: WICKERSLEY 2169

SANDRINGHAM CARAVANS, Moor Lane North, Ravenfield,  
Nr. Rotherham

MARK I.



MARK II.



### GENERAL SPECIFICATION

**CHASSIS** All Steel Electrically Welded Chassis.

**BODY FRAMING** 1"x 1 1/4" Selected Parana Pine.

**FLOOR** 3/8" Ply or 3/4" T and G. on 1 1/4"x 3" Timber.

**EXTERIOR PANELLING** 20 Gauge flat and preformed aluminium. All joints sealed and covered with aluminium mouldings. Roof seams interlocked and sealed.

**INTERIOR PANELLING** First quality Hardboard " thick.

**INSULATION** All vans insulated with Fibre Glass.

**WINDOWS** All 30"x 20" opening windows have radiused corners. All 54"x22" are the new Ellbee Louvred Type.

- A - DRESSING TABLE
- B - 4' x 6' ISLAND BED
- C - DOUBLE WARDROBE
- D - SINGLE WARDROBE
- E - BATH
- F - CORNER SINK
- G - COOKER
- H - CEILING LOCKER
- I - WORKING SURFACE FORMICA TOPS

- J - 36" x 18" SINK
- K - WATER HEATER
- L - TWIN BUNKS
- M - SIDEBOARD
- O - DROP LEAF TABLE
- P - COAL STOVE
- U - BED SETTEE
- R - FIRESIDE CHAIRS

#### EXTERIOR COLOURS -

- Pale Yellow - Wedgwood Blue.
- Pale Yellow - Black
- Oyster - Black
- Oyster - Wedgwood Blue

#### PLASTIC WORKING SURFACES Available in -

- Scarlet Red
- Sky Blue
- Primrose
- Softglow Formica
- Softglow Formica
- Softglow Formica

**KITCHEN FURNITURE** Painted to tone with Working Surfaces.

**FURNITURE** End Bedroom Sapelle - Limba  
Lounge Oak - Sapelle

ALL VANS CAN BE WIRED FOR MAINS ELECTRICITY AT EXTRA COST.

THE MANUFACTURERS RESERVE THE RIGHT TO ALTER OR AMEND THE PRICE OR SPECIFICATION WITHOUT PRIOR NOTICE.





**FAME** comes to the **SYLVA FARLANDER**

the World's finest **FOLDING CARAVAN**



**WINDING OPEN**  
(In 50 seconds)



**FULL OPEN**  
6ft. 5ins. Headroom

Two-berth **£295**  
Four-berth **£307**

This is a quality caravan ; an engineering feat !  
 Easy to tow ; easy to stow ; no storage problems.  
 The ideal caravan for the city dweller, or for the man who likes to travel fast and far.  
 Length 10 ft.; width 6 ft.; headroom 6 ft. 5 ins.; folds down to a travelling height of only 4 ft. Rear view for driver. Easy view for other drivers following.  
 Fully Equipped with beds, storage lockers, table and utility cupboard. Rear end opens up to form a sun canopy. All aluminium sheeting on steel frame.

**THREE MODELS AVAILABLE**

Two-berth **£295.** Four berth **£307.**

De luxe fibreglass model **£395.**



**UPPER BERTH**

**SUN CANOPY OPEN**

**H.P. TERMS AVAILABLE**

**INSURANCE AND STORAGE ARRANGEMENTS**

# FROM LOW BUILT TRAILER TO FOUR-BERTH CABIN IN SECONDS

## WHAT THEY SAY

THE SCOTSMAN

J.C. Bowman; Motoring Correspondent.

"An open and shut case .... folds up for compact and safe towing."

THE AUTOCAR

"Ever since trailer caravans came into existence there have been numerous attempts at designing one which would fold into a compact space for towing and storage. The latest, and perhaps the most ingenious of these is the FARLANDER."

MODERN CARAVAN

"A folding trailer of unique design."

COURTENAY EDWARDS in the DAILY MAIL

"Ingeniously designed ... so small, such a low roofline and gravity centre, that you hardly know there's anything hitched to the back of your car....Even at 70....was most docile..."

ROBERT WALLING of the EVENING STANDARD

"Something new ... the Farlander ... at the pull of a handle, converts into a four-berth trailer...."

Mr. Peter Dakin - on a two year world tour - writes:-

"EVERY DAY I USE THE FARLANDER I AM MORE AWARE OF THE ADVANTAGES THAT OVERPOWER THE USE OF A CONVENTIONAL CARAVAN. I AM OFTEN UNAWARE THAT I AM ACTUALLY TOWLING A TRAILER, AND SHE FITS SO SNUGLY BEHIND THAT I REGRET I FIND DIFFICULTY TO FIND COMPLAINT OR CRITICISM, AS I KNOW YOU WILL APPRECIATE".

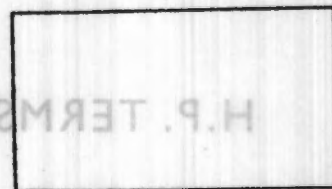
### Technical Description

**CHASSIS.** All steel incorporating Rubery Owen Independent Suspension system and detachable towbar. **OPENING AND CLOSING SYSTEM.** By 1½" diameter solid steel lead screw, positioned between the members of the drawbar. Rotation of this lead screw by the handle provided moves the nut fitted thereon backwards or forwards according to the direction of rotation. This in turn erects or closes the Hood. It is foolproof and of great strength. **JACKS.** Three of the drop down type, and one screw down type. **FLASHING INDICATORS.** **GIRLING BRAKES:-** Internally expanding, operated by override device with independent ratchet control for parking. **WHEELS.** Pressed steel easy clean, 5.20 x 12" tyres. **HOOD.** Of tubular steel construction, the top being covered with aluminium sheeting riveted on to the steel frame in line with aircraft practice. **BODY PANELS.** Of waterproof resin bonded laminated board. **WINDOWS.** With polished aluminium frames. Two side windows fully opening, one fixed in the rear. **FURNITURE.** Berths, 2 lower with full length lockers, and 4" plastic foam mattresses. In the 4-berth model, the upper berths are of tubular steel construction with hammock type canvas fitted to the longitudinal tubes. A General Purpose cabinet is part of the standard equipment, and this provides accommodation for a grill, a 10-lb. gas bottle, and other equipment (the grill etc., are not supplied as part of the standard equipment). A flap type table is also provided and as this is free standing it can also be used outside the Farlander. Curtains are fitted to all the windows, suspended from Silent Gliss fittings. A pole is supplied for support of the rear canopy when it is used in the open position. **DIMENSIONS:** **Towing position.** Length of body, 7' overall; Length to end of draw bar, 11'3". Width, 6'1", height from ground 4'. **Opened Up.** Length of body 10'. Width 6'. Head room 6'5". With Canopy open, effective length of body is 14'. Weight ex-Works 9½ cwt. including all standard equipment. Dimensions and weight approximate.



**SERVICE**

Your nearest Agent is



or write direct to :

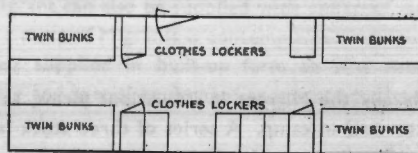
CARAVAN HOUSE • 7-8 THAYER STREET • WIGMORE STREET • LONDON W 1

Tel: Welbeck 3487, 4508 8752, 2063

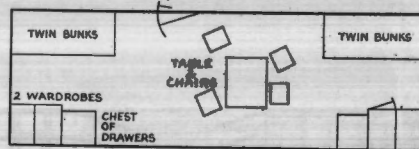




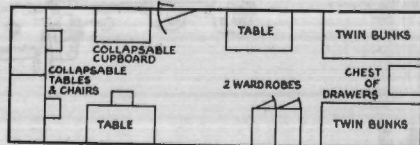
# SPECIFICATION



EIGHT BERTH UNIT



FOUR BERTH UNIT



OFFICE / TWO BERTH UNIT

**Dimensions:** 24' 0" × 8' 0" × 8' 0". Headroom 7' 4".

**Shipping size with skids:** 25' 6" × 8' 10" × 2' 4" high.

**Construction:** All-steel body-frame and chassis with 3" insulation. 6" × 3" R.S.J. skids. Exterior covered in 20 g. stucco aluminium left bright. Interior covered in 20 g. stucco aluminium painted off-white. Four windows, three opening with flyscreens. Door fitted with flyscreen. Floor of  $\frac{3}{8}$ " waterproof ply with galvanized steel underfloor.

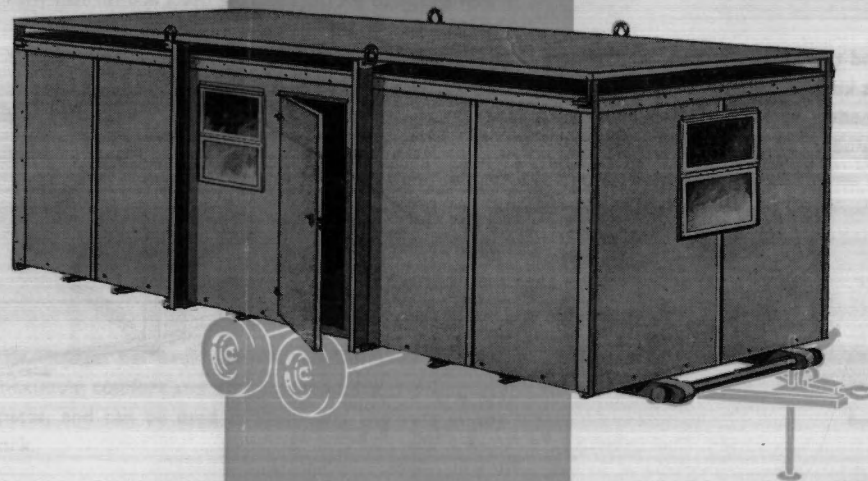
**Optional extras include:** Towbar, Undergear, etc., with 9.00 × 16 tyres or sand tyres. Sun canopy. Air conditioning. Furniture of Knocked-down type, i.e. beds, wardrobes, lockers, etc. Kitchen, shower and other more complicated units would be supplied in built-up form and fitted out.

**ROLLALONG LTD**

RINGWOOD, HANTS.

TEL. RINGWOOD 11267

# **MIGRANT**



**OVERSEAS CONTRACTORS**, working in the field, invariably find accommodation for workers their biggest problem. The Migrant, collapsible and versatile, ends this headache.

**DURABILITY AND EASE OF ERECTION** are two of the more important features in this portable building. It can be erected anywhere, any time with a minimum of skill and labour.

**SHIPPING CHARGES** are slashed as the Migrant occupies less than one-third of its normal volume when packed for freight, and they will stack one on top of the other.

**WITH OR WITHOUT WHEELS**